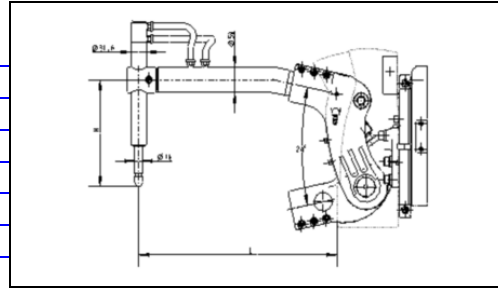


Standard Arms for P Series Scissor Guns.....cont'd from p8.20

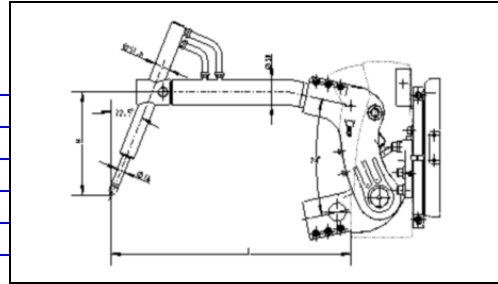
**Straight Arms with 90° vertical stem type holder**

	<b>Length</b>
PWA25130	250
PWA25131	300
PWA25132	400
PWA25133	500
PWA25134	600
PWA25135	700



**Straight Arms with 15° angled stem type holder**

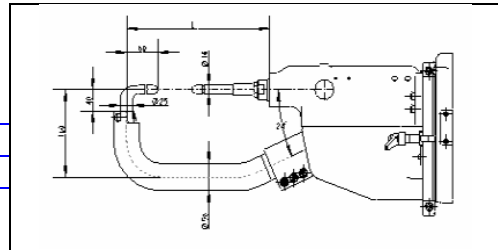
PWA25142	250
PWA25143	300
PWA25144	400
PWA25145	500
PWA25146	600
PWA25147	700



**Standard "C" Gun Arm Arrangements**

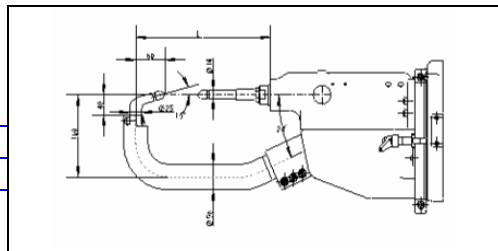
**Single bend with 90° holders  
150mm arm centres**

PWA25148	300
PWA25149	400
PWA25150	500



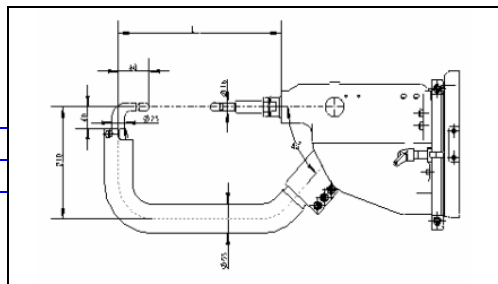
**Single bend with 15° angled fixed holder  
150mm arm centres**

PWA25151	300
PWA35152	400
PWA25153	500



**Single bend with 90° holders  
250mm arm centres**

PWA25154	300
PWA25155	400
PWA25155	500



**Single bend with 15° angled fixed holder  
250mm arm centres**

PWA25157	300
PWA25158	400
PWA25159	500

